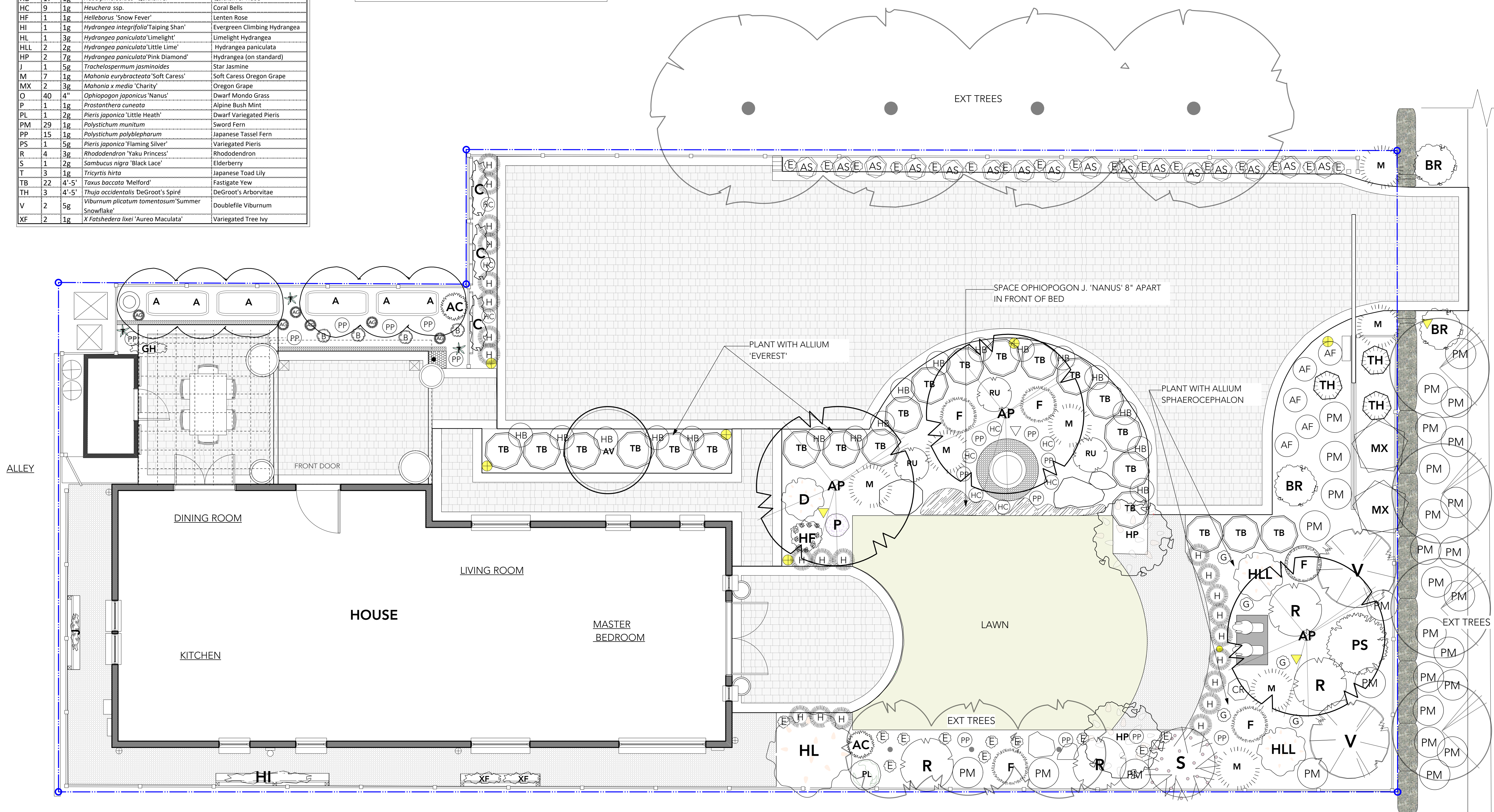
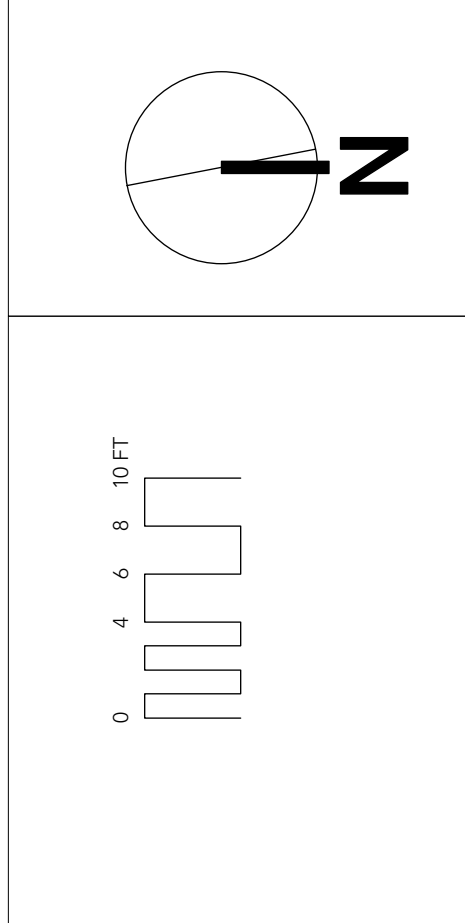


ID	QTY	SZ	BOTANICAL NAME	COMMON NAME
A	6	7g	<i>Azara microphylla</i>	Box Leaf Azara
AC	1	1g	<i>Actaea simplex</i> 'Hillside Blackbeauty'	Bugbane
AF	5	2g	<i>Dryopteris erythrosora</i> 'Brilliance'	Autum Fern
AG	6	1g	<i>Acorus gramineus</i>	Variagated Sweet Flag
AP	3	2"	<i>Acer palmatum</i> 'Bloodgood'	Bloodgood Japanese Maple
AS	16	1g	<i>Asplenium scolopendrium</i>	Hart's Tongue fern
AV	1	7g	<i>Azara microphylla</i> 'Variegata'	Variegated Boxleaf Azara
B	4	1g	<i>Beesia deltophylla</i>	Beesia
BR	3	2g	<i>Berberis thunbergii</i> 'Cherry Bomb'	Barberry
C	3	5g	<i>Camellia sasanqua</i> 'White Doves'	Sasanqua Camellia
CR	1	3g	<i>Cryptomeria japonica</i> 'Little Diamond'	Little Diamond Japanese Cedar
D	1	2g	<i>Daphne transatlantica</i> 'Eternal Fragrance'	Daphne
E	28	1g	<i>Epimedium x versicolor</i> 'Sulphureum'	Bishop's Hat
F	5	2g	<i>Fuchsia</i> 'Debron's Black Cherry'	Hardy Fuchsia
G	5	1g	<i>Geum</i> 'Mrs. Bradshaw'	Geum
GH	1	1g	<i>Humulus lupulus</i> 'Aureus'	Golden Hops
H	23	1g	<i>Hakonechloa macra</i> 'Aureola'	Japanese Forest Grass
HB	17	1g	<i>Hebe pimeleoides</i> 'Quicksilver'	Quicksilver Hebe
HC	9	1g	<i>Heuchera</i> ssp.	Coral Bells
HF	1	1g	<i>Helleborus</i> 'Snow Fever'	Lenten Rose
HI	1	1g	<i>Hydrangea integrifolia</i> 'Taiping Shan'	Evergreen Climbing Hydrangea
HL	1	3g	<i>Hydrangea paniculata</i> 'Limelight'	Limelight Hydrangea
HLL	2	2g	<i>Hydrangea paniculata</i> 'Little Lime'	Hydrangea paniculata
HP	2	7g	<i>Hydrangea paniculata</i> 'Pink Diamond'	Hydrangea (on standard)
J	1	5g	<i>Trachelospermum jasminoides</i>	Star Jasmine
M	7	1g	<i>Mahonia eurybracteata</i> 'Soft Caress'	Soft Caress Oregon Grape
MX	2	3g	<i>Mahonia x media</i> 'Charity'	Oregon Grape
O	40	4"	<i>Ophiopogon japonicus</i> 'Nanus'	Dwarf Mondo Grass
P	1	1g	<i>Prostanthera cuneata</i>	Alpine Bush Mint
PL	1	2g	<i>Pieris japonica</i> 'Little Heath'	Dwarf Variegated Pieris
PM	29	1g	<i>Polystichum munitum</i>	Sword Fern
PP	15	1g	<i>Polystichum polyblepharum</i>	Japanese Tassel Fern
PS	1	5g	<i>Pieris japonica</i> 'Flaming Silver'	Variagated Pieris
R	4	3g	<i>Rhododendron</i> 'Yaku Princess'	Rhododendron
S	1	2g	<i>Sambucus nigra</i> 'Black Lace'	Elderberry
T	3	1g	<i>Tricyrtis hirta</i>	Japanese Toad Lily
TB	22	4'-5"	<i>Taxus baccata</i> 'Melford'	Fastigate Yew
TH	3	4'-5"	<i>Thuja occidentalis</i> 'DeGroot's Spiré'	DeGroot's Arborvitae
V	2	5g	<i>Viburnum plicatum tomentosum</i> 'Summer Snowflake'	Doublefile Viburnum
XF	2	1g	<i>X Fatshedera lizei</i> 'Aureo Maculata'	Variagated Tree Ivy

**PLANTING NOTES:**

- DO NOT COMPACT SOIL WHILE WORKING.
- TREES/SHRUBS:** REMOVE BURLAP, ROPE & WIRE. FIND ROOT FLARE. PLANT LEVEL WITH GRADE. FORM RAISED RING OF SOIL AROUND ROOT BALL TO DIRECT WATER TO PLANT ROOTS. KEEP MULCH OFF TRUNK.
- GROUNDCOVERS/PERENNIALS:** CAREFULLY LOOSEN ROOTS IF ROOT BOUND. PLANT LEVEL WITH GRADE. KEEP MULCH AWAY FROM STEMS.
- WATER ALL PLANTS WELL. ADJUST IRRIGATION TO COVER ALL PLANTS.
- MULCH:** USE COMPOSTED FERTILE MULCH FROM PACIFIC TOPSOIL, SAWDUST SUPPLY OR CEDAR GROVE. APPLY 2"-3" DEEP ON SURFACE. DO NOT LET MULCH TOUCH TRUNKS OR STEMS OF PLANTS.



2 Planting Plan  
Scale: 1/4" = 1'-0"