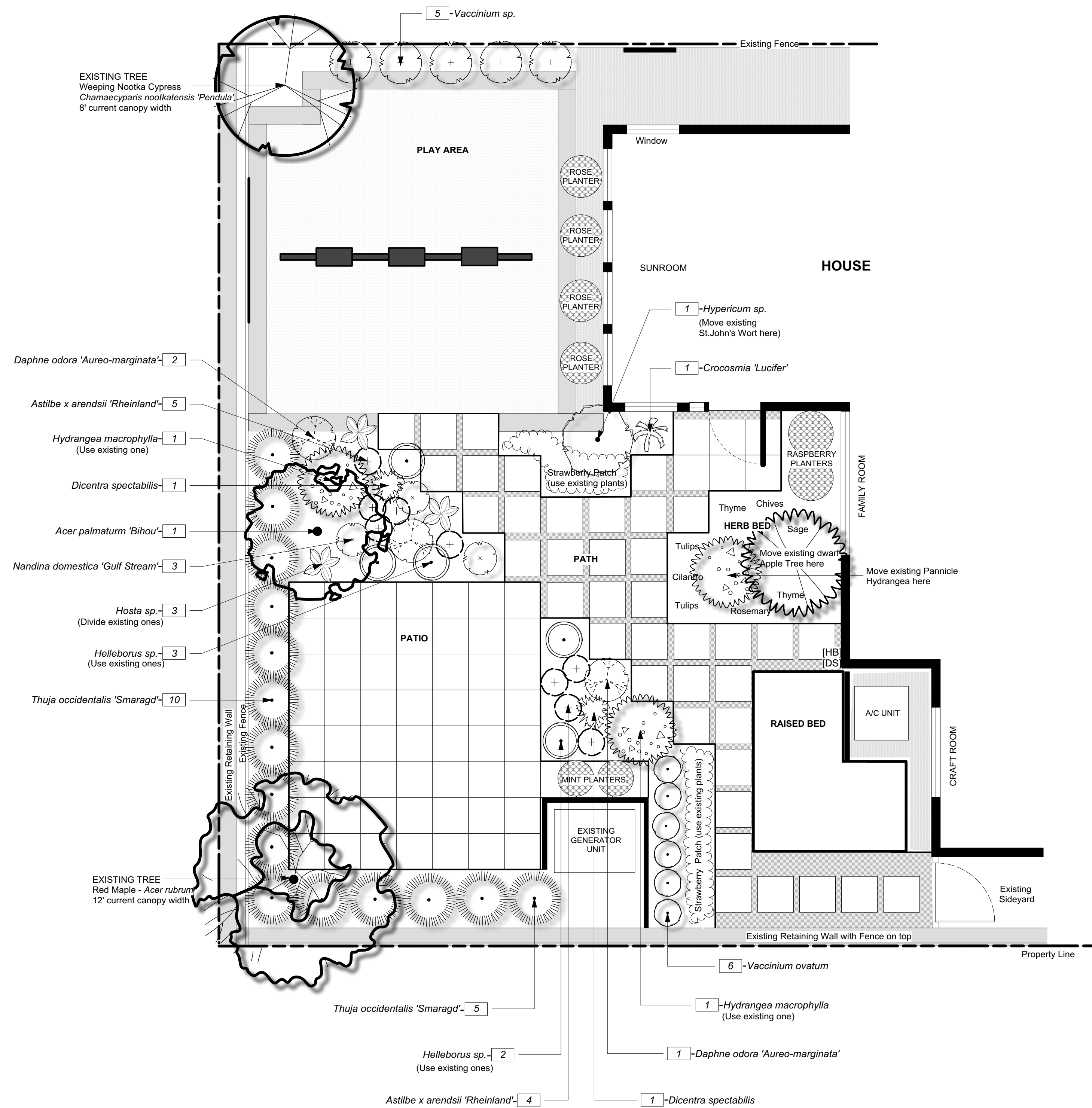


PLANT LIST

Quantity	Latin Name	Common Name	Size	Notes
Trees				
1	<i>Acer palmatum</i> 'Bihou'	Bihou Jap. Maple	7G / 10G	Preferred height - 5' tall
15	<i>Thuja occidentalis</i> 'Smaragd'	Emerald Green Arborvitae	8'-9' tall	
1	<i>Malus sp.</i>	Dwarf Apple Tree	-	Transplant existing one
Shrubs				
3	<i>Daphne odora</i> 'Aureo-marginata'	Variegated Winter Daphne	2G	
3	<i>Hydrangea sp.</i>	Bigleaf and Pannicle Hydrangea	-	Transplant existing ones
1	<i>Hypericum sp.</i>	Existing St. John's Wort	-	Transplant existing one
3	<i>Nandina domestica</i> 'Gulf Stream'	Gulfstream Heavenly Bamboo	2G	
2	<i>Rubus sp.</i>	Fruiting Raspberry	1G	Varieties - Meeker, Sumner
4	<i>Rosa sp.</i>	Shrub Roses	-	Transplant existing ones
1	<i>Rosmarinus sp.</i> 'Arp'	Arp Rosemary	1G	
1	<i>Salvia officinalis</i>	Culinary Sage	-	Transplant existing one
6	<i>Vaccinium ovatum</i>	Evergreen Huckleberry	1G	
5	<i>Vaccinium sp.</i>	Fruiting Blueberries	2G	Varieties - Blue Ray, Chandler, Northland
Perennials				
9	<i>Astilbe x arendsii</i> 'Rheinland'	Rheinland Astilbe	1G	
1	<i>Allium tuberosum</i>	Garlic Chives	1G	
1	<i>Crocsmia</i> 'Lucifer'	Lucifer Montbretia	1G	
2	<i>Dicentra spectabilis</i>	Bleeding Hearts	1G	
5	<i>Helleborus x hybridus</i>	Hellebores	1G	Varieties - Jacob, Penny's Pink, Pink Frost
3	<i>Hosta sp.</i>	Plantain Lily	-	Divide and transplant existing plants
Groundcovers				
As needed	<i>Fragaria sp.</i>	Fruiting Strawberry	-	Transplant existing ones
As needed	<i>Mentha sp.</i>	Culinary Mint	-	Transplant existing ones
2	<i>Thymus vulgaris</i>	Culinary Thyme	4"	Varieties - French, Lemon

RECOMMENDATIONS FOR PLANTING

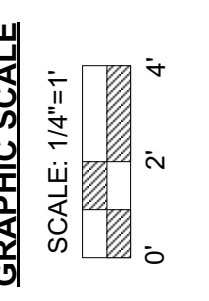
- * Amend all planting beds with 3" of compost and bio-char. Rototill, if necessary, esp. in compacted areas.
- * Place plants as per design, readjust locations slightly, as needed. Mark the plant location and keep plant aside.
- * Dig a hole the same depth as the container/rootball and twice as wide as the container/rootball.
- * Scarify the subgrade sides of the planting hole when planting in clay soil.
- * Remove plant from container, loosen / disturb the rootball and place in the planting hole level with soil surface, or 1"-2" above if soil is prone to settling.
- * If B&B plant, then remove the burlap from at least 12" of the rootball, without removing the rootball. Remove all cord & wire basket (if present) from the rootball.
- * Backfill with excavated native soil, broken up or tilled. Water to remove air pockets.
- * Do not add compost or any other amendments to the planting hole. Avoid use of landscape fabric in planting beds.
- * Mulch with Pro Mulch (a mix of compost and aged forest products) from Cedar Grove to a depth of 1" to 3".
- * Pruning shall be limited to dead, diseased or broken limbs only. Remove any warps or labels around the plant.
- * Planters - provide EB Organics potting soil and final hookup of irrigation through the drip system.



2 PLANTING PLAN
Scale: 1/4" = 1'-0"

KEY

- Strawberry Patch - Plant all the salvaged strawberry plants, 6" apart, in staggered rows. Verify in field.
- Existing Planters - to be relocated as shown in plan. They are to be repurposed with new potting soil and planted with salvaged existing plants.
- [HB] Hose Bib
- [DS] Down Spout
- Property Line
- *Vaccinium ovatum*
- Plant Quantity
- Botanical Name



DATE
04-24-2017

Please note : This landscape design, accompanying project notes and resources are for layout and illustration purposes only. In no way are they to be interpreted as construction details or specifications. They are subject to interpretation by the installer / contractor. We make no claim or warranty, stated or implied, as to the absolute accuracy of the site measurements, location of utilities or final suitability for construction. All dimensions are approximate and must be field-verified. Refer to agreement between client and contractor for actual approved scope of work and further information. Actual construction appearance, materials, quantities and sizes may vary from that shown on plan.